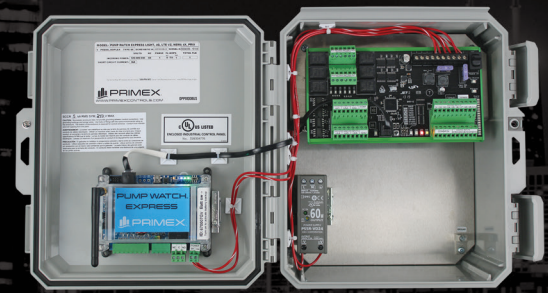


PUMP WATCH™ EXPRESS ION

CLOUD-BASED
CELLULAR MONITORING



OVERVIEW

The Pump Watch™ Express ION is a simple and effective tool to monitor one or multiple remote sites. Information from your station is transmitted over a cellular network to a cloud server, where it can be viewed from any web browser using a secure login. Receive alarm notifications, track equipment performance, visualize site operation status via a graphical interface, and generate reports.

- Simple and clear graphical HMI
- Operator assignment of I/O descriptions
- Notifications received via SMS, email, or viewed on the web portal
- Alarm notifications can be assigned to multiple users with escalation and acknowledgment
- Battery backup to provide loss of power alarm notification
- Analog inputs are configurable to provide high and low-level alarms
- Reporting and pump diagnostic information
- Graphical data trends, accumulation bar graphs, and data tables
- Interactive mapping location of all remote stations
- First year of cell service is included
- iOS or Android App is available for your mobile device

ORDERING INFORMATION

NEMA 4X Control Panel:

- 1063016 NEMA 4X iON Panel - 12x10x6 thermoplastic enclosure
- 1064778 NEMA 4X iON Panel - 16x14x10 stainless steel enclosure

Components for Panel Mounted Application:

Must order one of each component to connect gateway to I/O module (Gateway, iON28 Module and a Cable):

- 1054662 Pump Watch Express Gateway
- 1063164 iON28 Module
- 1038522 6 Foot Communications Cable
- 1038335 6 Inch Communications Cable

Accessories:

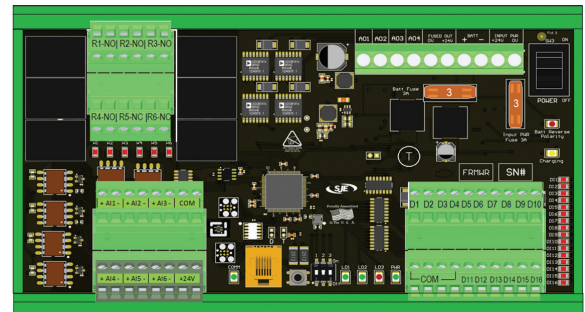
- 1064542 5db Exterior Panel Mounted Antenna Assembly (Outdoor Rated)
- 1038899 High Gain Penta Band Outdoor Antenna Assembly
- 1053788 Surge Arrestor for High Gain Antenna

*Consult factory for countries outside USA

SPECIFICATIONS

Pump Watch Express Gateway: 4G LTE
Battery backup: 12 V, 7.2 Ah, SLA
24 VDC Power supply: 120 VAC input; 2.5 Amps
iON28 module:

- 6 analog inputs, 4-20mA differential and optically isolated, 12-bit resolution
- 16 digital inputs: 12 VDC common ground
 - D1-D4 designated Motors Running (runtime and cycles)
 - D5 & D6 designated as Flow Totalizer inputs (max rate 100 HZ)
 - D7-D16 configurable as Alarm inputs
- 6 relay outputs: 250V, 5A (resistive)
 - R1-R4 Normally Open
 - R5 & R6 Normally Closed
 - Relay outputs are momentary operation



Dashboards available (templates):

- Generic - Ideal for water treatment applications up to 4 pumps
- Lift Station - For duplex or triplex lift stations volumetric flow calculation (cycle based)



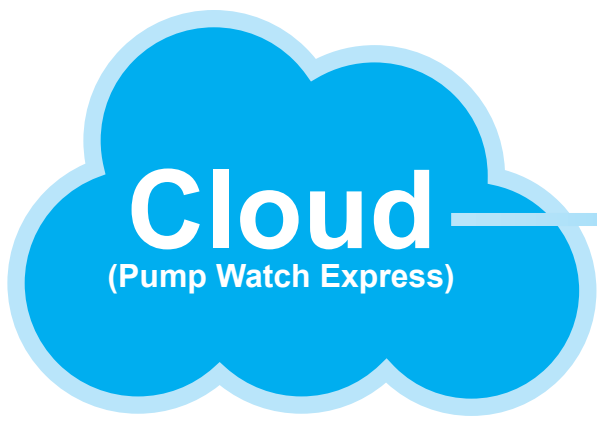
844-4PRIMEX (477-4639)
WWW.PRIMEXCONTROLS.COM



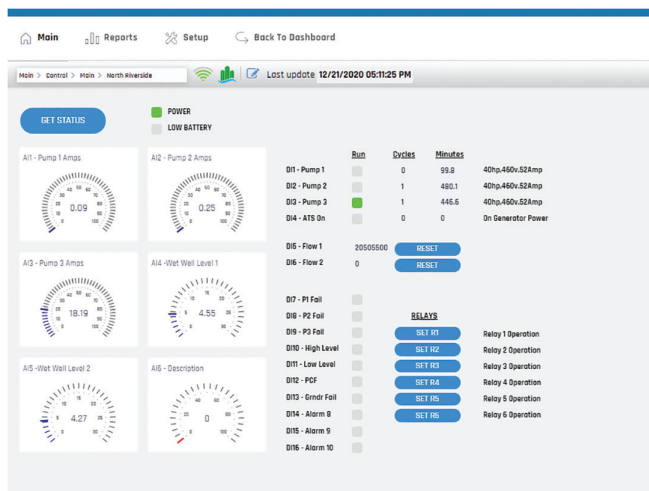
9500434B 01/21
© 2018 SJE, Inc. All Rights Reserved.
PRIMEX is a trademark of SJE, Inc.

PUMP WATCH™ EXPRESS ION

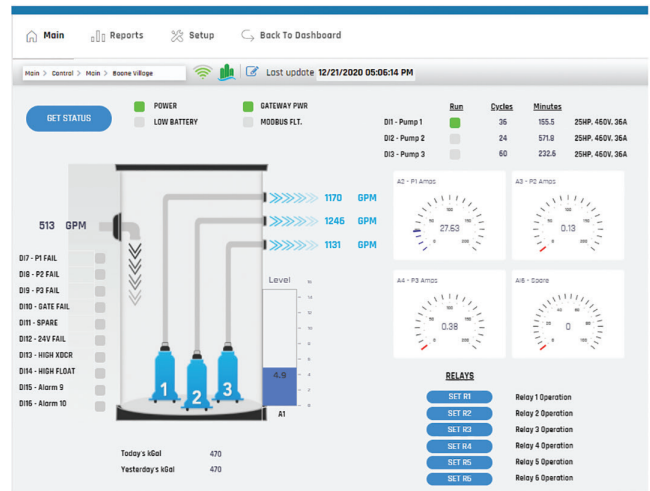
CLOUD-BASED CELLULAR MONITORING



AVAILABLE DASHBOARDS



Generic (iON Mobile)



Lift Station (iON28 Dup/Trip)



844-4PRIMEX (477-4639)
WWW.PRIMEXCONTROLS.COM